

# D15HD-F-F-V1A

## 1. Description:

D15HD-F-F-V1A is a simple DB15HD VGA Female to DB15HD Female pass-through adapter breakout board. It brings all 15 pins of two DB15HD Female connectors to screw terminal blocks and headers for easy testing, prototyping and breadboard connection. All 9 pins of a Female connector directly connect to another Female connector. User can also use the two 8 pins headers on both sides of the breakout board to connect to breadboard or prototype PCB.

## 2. Features:

- All 16 pins (including shield) of two DB15HD Female connectors brought out to headers and screw terminal blocks
- All 15 pins of a DB15HD Female connector directly connect to another DB15HD Female connector.
- Various connecting method chosen by users.
- 4 X 2.0mm mounting holes
- 1.57"(40mm)X2.34"(59.4mm) board dimensions

## 3. Parts:

- 1) 1pc X D15-FM-FM-V1A PCB
- 2) 2pc X DB15HD Female Connector
- 3) 2pc X 8pin 0.1"(2.54mm) spacing terminal block
- 4) 1pc X 16pin 0.1"(2.54mm) header
- 5) 4pcs X4-40UNC diameter 8.3mm long screws



Figure 1: Parts inside the kit  
(Note: the module is not assembled, user can decide which connector to use on the module.)

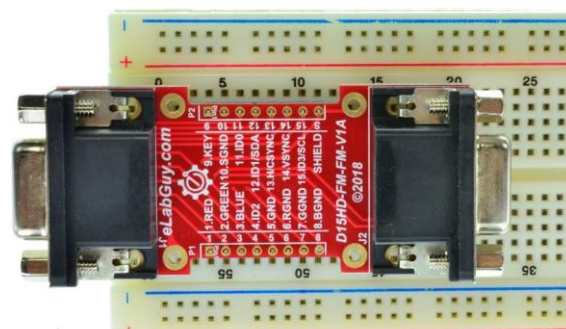


Figure 2: Example of connecting the D15HD-F-F-V1A on a proto PCB (Note: This picture only shows the pins spacing, actual use may not be used on a breadboard)



Figure 3: D15HD-F-F-V1A with headers



Figure 4: D15HD-F-F-V1A with terminal blocks

**Caution!! When assembling the D15HD-F-F-V1A, please make sure you place the connector on the right side.**



### Related products from eLabGuy:



D15HD-F-M-V1A



D15HD-F-F-V1A



D15HD-M-M-V1A